



Download Toppr - India's best learning app for classes 5th to 12th

360° learning with our adaptive platform



Online Classes

Learn for free with short videos and live classes



Adaptive Practice

Practice smart with questions created for your unique needs



Mock Tests

Be exam ready by solving all India tests and previous years' papers



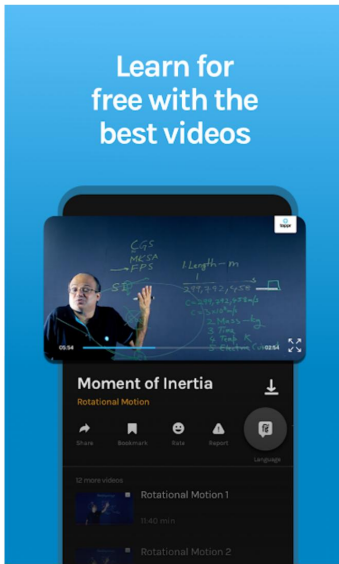
Live Doubts

Chat with tutors and get your doubts resolved instantly, 24x7

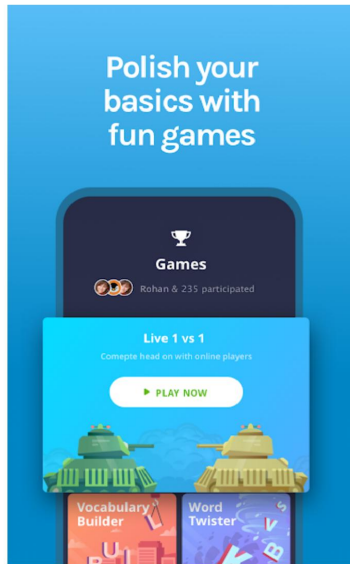


Live Classes

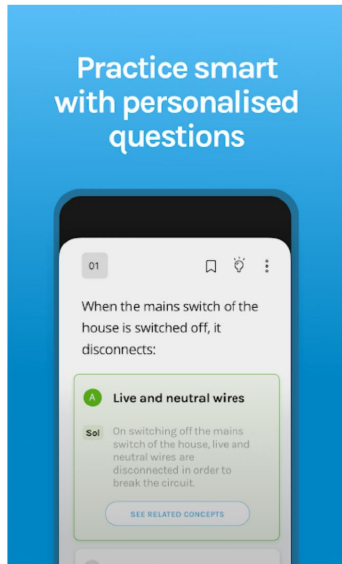
Learn concepts and get tips from the best teachers with free Live Classes



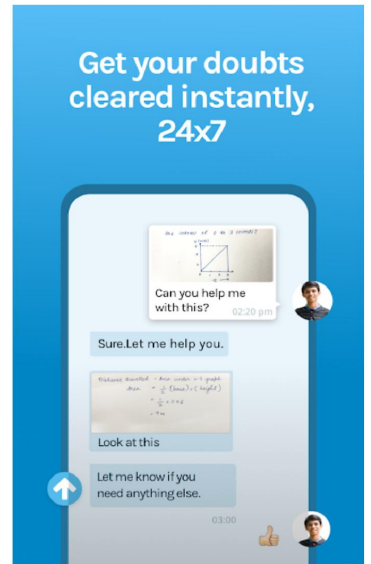
Learn for free with the best videos



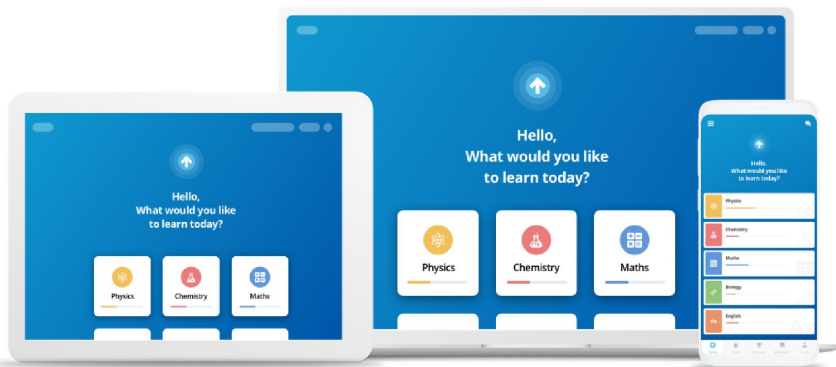
Polish your basics with fun games



Practice smart with personalised questions



Get your doubts cleared instantly, 24x7



Download the app for FREE now

GET A 5-DAY FREE TRIAL



9,184,321 HAPPY STUDENTS

492,461,127 QUESTIONS ATTEMPTED

3,986,828 TESTS TAKEN

8,017,171 DOUBTS ANSWERED

NCERT Solutions for Class 7 Subject-wise

- [Class 7 English](#)
- [Class 7 Maths](#)
- [Class 7 Science](#)
- [Class 7 Social Science – History](#)
- [Class 7 Social Science – Geography](#)
- [Class 7 General Knowledge](#)

#634476

Topic: Flower

What are unisexual and bisexual flowers?

Solution

Flower is a reproductive organ of the angiospermic plant. A typical flower consists sepals, petals, stamens and carpels in distinct whorls normally known as calyx, corolla, androecium and gynoecium.

A flower having both stamens as well as pistils is called bisexual flower. Flowers which are either staminate (bearing stamens only) or pistillate (bearing pistils only) are termed as unisexual flowers.

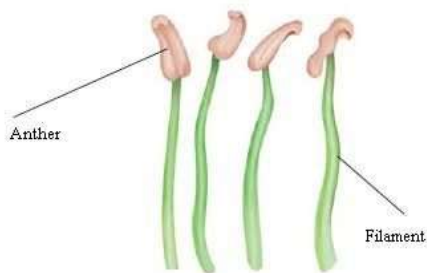
#634494

Topic: Flower

Name the male part of a flower. Write names of its parts and draw a diagram.

Solution

Stamen is the pollen-producing, male reproductive organ of a flower. The stamen has two parts: (i) anther and (ii) stalk (filament)



#634495

Topic: Flower

Name the female part of a flower. Name its parts and draw a diagram.

Solution

Pistil is the ovule producing, female reproductive part of a flower. It is the innermost part of a flower. The pistil consists of three parts:

- (i) Stigma- the flat, sticky upper portion
- (ii) Style- the stalk that extends below the stigma
- (iii) Ovary- the swollen base which contains the ovules

