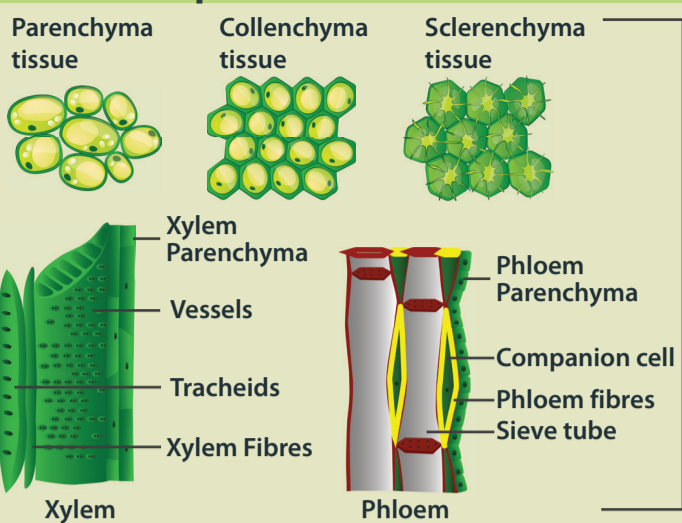
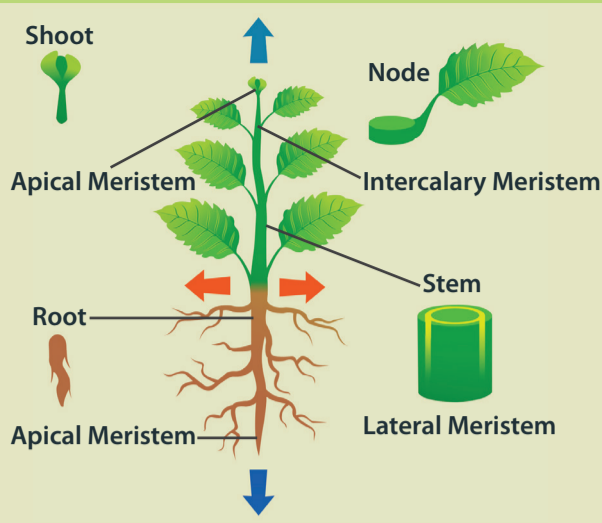


Simple Permanent Tissue



Permanent Tissue:
Lost the power to divide

Meristematic Tissue



Meristematic Tissue:
Has the power to divide itself

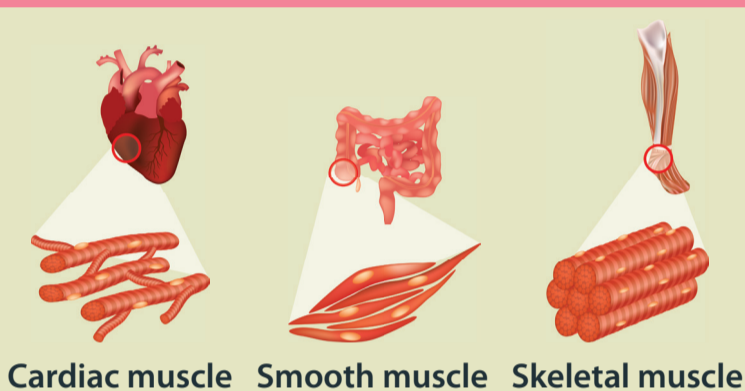
Plants

Tissue

Group of cells performing similar function

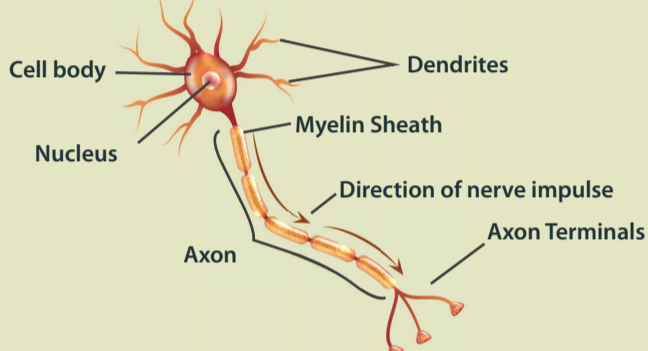
Animals

Muscle Tissue



Nervous Tissue

Made up of neurons (nerve cells)



Epithelial Tissue

- Lines the cavities of the mouth, oesophagus, alveoli, and blood vessels
- Gives protection against mechanical injury and also blocks the entry of germs



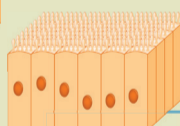
Simple Squamous



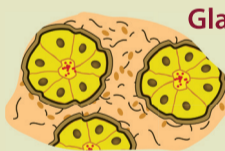
Simple Cuboidal



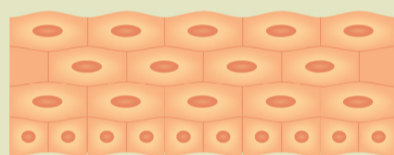
Simple Columnar



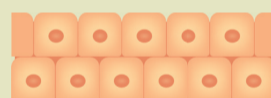
Ciliated Columnar



Glandular Epithelium



Stratified Squamous



Stratified Cuboidal

- Found in the lining of the stomach and intestine
- Functions include absorption and secretion

- Found in the salivary glands, kidney tubules, sweat glands, etc.
- Main function includes absorption, secretion, and excretion

- Present in the tear glands, sweat glands etc.
- Main function is secretion

- Present in the lining of the trachea, kidney tubules, etc.
- Cilia help in the movement of material in one direction

Connective Tissue

