

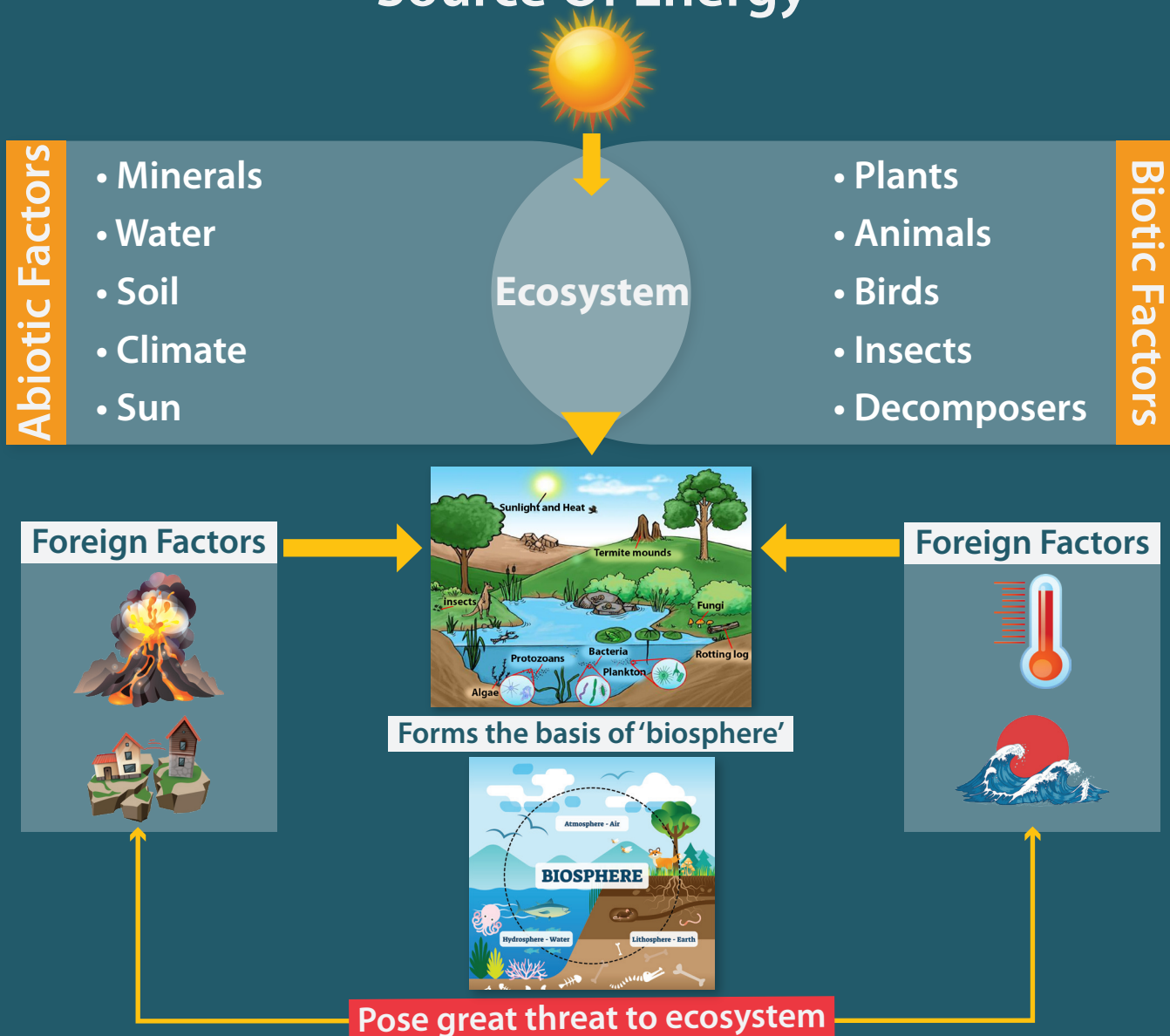
Our Environment - Part I

Our Environment: Ecosystem

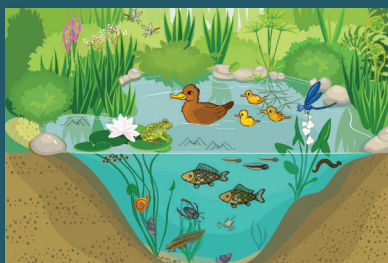
Ecosystem

Complex interaction between biotic & abiotic components that maintain the natural balance of earth

Source Of Energy

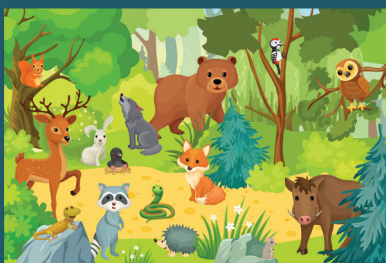


Types of Ecosystems/Biomes



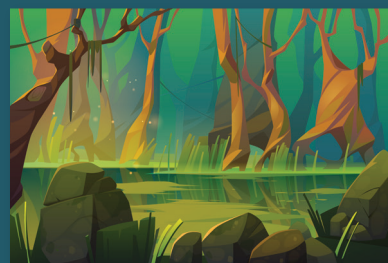
Aquatic biome

- Pond biome
- River biome
- Shallow water biome
- Deepwater biome



Terrestrial biome

- Rainforests
- Tundra
- Deserts
- Forests



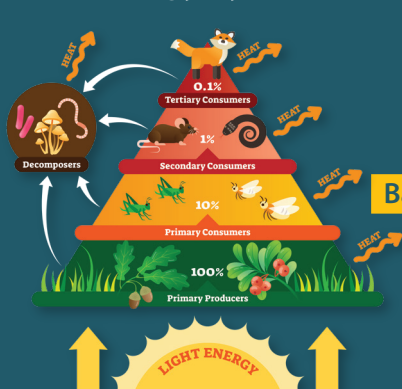
Lentic biome

- Support both aquatic & terrestrial life forms
- Only need: Exposure for photosynthesis

Trophic levels

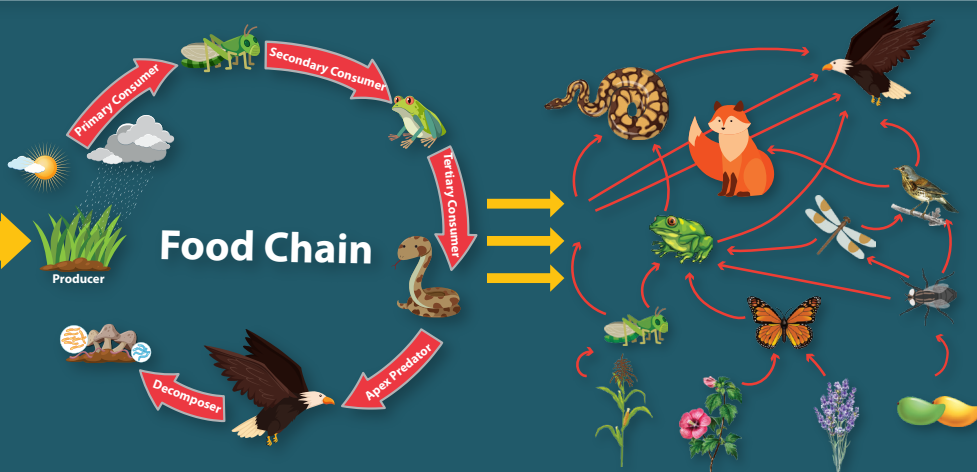
Nutritive levels denoting energy flow & feeding pattern in food chain

Energy Pyramid



Basis of food chain

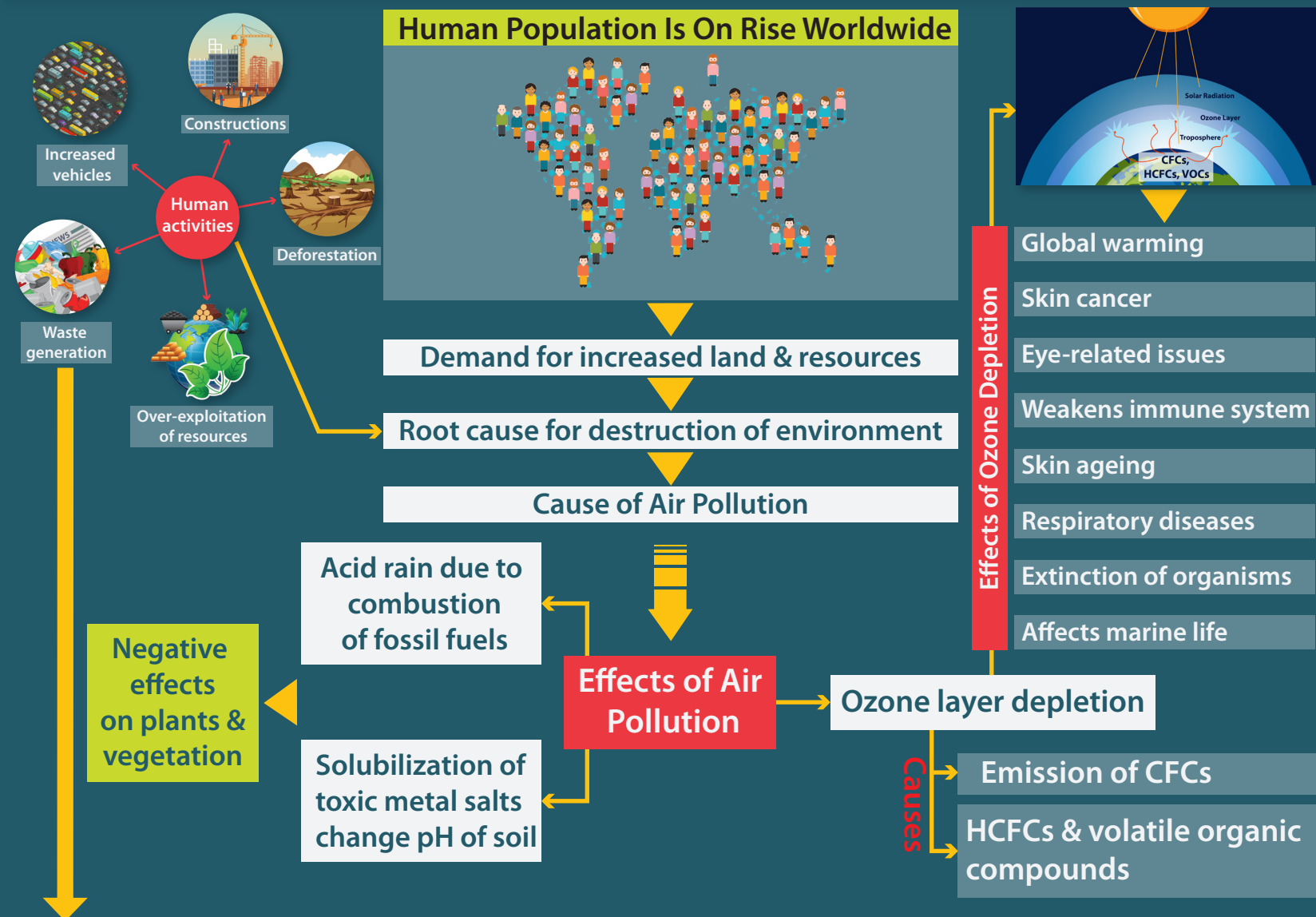
Food Chain



Trophic Levels

Characteristic to every biome

Effects of Human Activities on Environment



Waste Generation

Waste Any unwanted, discarded or useless material

Types of Wastes

Municipal waste

Common everyday items



Hazardous waste

Solid, liquid & gaseous wastes from industries

- Properties**
- Corrosiveness
 - Ignitability
 - Reactivity
 - Toxicity

Biomedical waste

Wastes from medical facilities



Categories of Wastes



Waste Disposal Methods

Various alternatives to dispose off wastes

